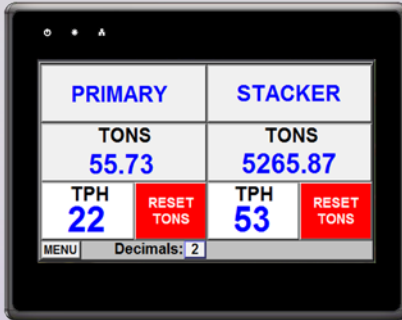


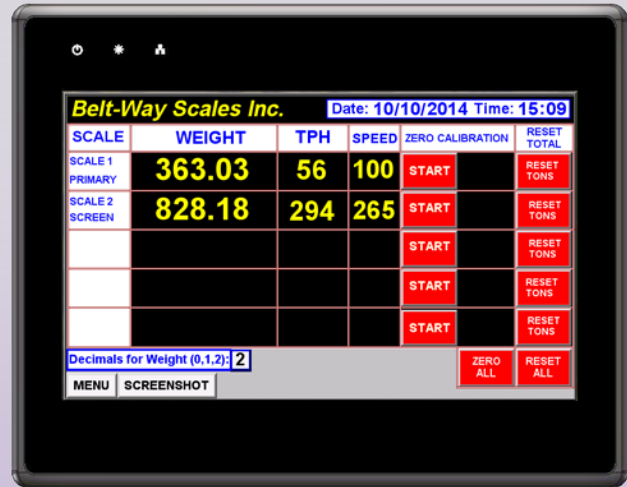
Remote Display Options

4 inch Remote Display



- 1 or 2 scale configuration

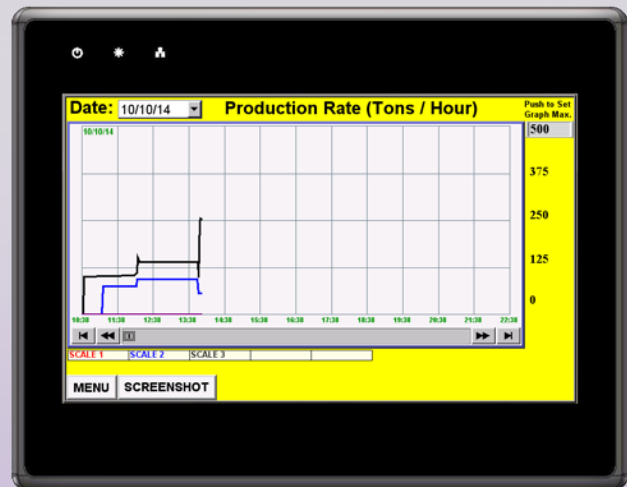
7 inch Remote Display



- 5 scale standard configuration

Remote Display Features

- Custom Scale / Product names
- Reset totals on all scales
- Perform zero calibration on all scales
- Calibration settings screen
- TPH / Total Tons line graph
- TPH / Total Tons data log to USB
- Screenshot to USB capability
- Optional printer capability
- Optional connection to PLC
- Custom software configuration available upon request



Remote Display Specifications

Display:

16 million color TFT touchscreen

30,000 hour LED backlight

4 inch - 4.3" diagonal (Resolution 480 x 272 pixels)

7 inch - 7" diagonal (Resolution 800x480 pixels)

Enclosure dimensions:

4 inch - 8" x 6" x 4"

7 inch - 10" x 8" x 6"

Communications:

Ethernet - Modbus TCP

Hardwire or wireless connections possible

Data storage:

128 MB onboard memory

4 GB USB flash drive

Power:

4 inch - 24 VDC @ 300 mA

7 inch - 24 VDC @ 350 mA

110/220 VAC to 24 VDC power supply included with each display

Operating Temp:

32 - 122 ° F (0 - 50 °C)

Environmental Rating:

IP65 - FOR INDOOR USE ONLY!